



Sunlight RES SOPzS Key Advantages

Looking for the perfect balance between long cycle life and low cost in your energy system?

RES SOPzS is the advanced, cost-effective solution ideal for your energy storage installation!



Minimum Maintenance Requirements



Long Cycle Life up to 2400 cycles at 50% DoD



Operational Safety



Fully Recyclable Product
Circular Economy Enabler

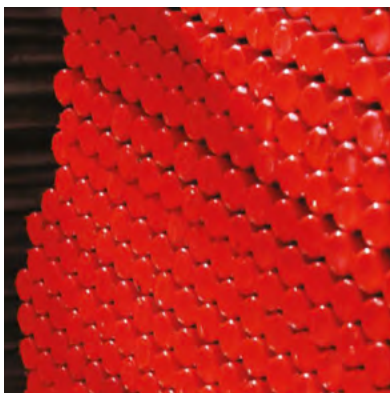


High Capacity Performance



Modular Solution
Complete System Installation Available as Option

The Sunlight Red Lead Advantage



Features

99.99% pure lead for Red Lead production

100% Red Lead in our positive plates through dry filling process

100% plates weight control and data statistical evaluation

Benefits

Longer life span of batteries

Full Capacity within the first 3-5 cycles

Minimized self-discharge

Sustained performance throughout battery lifetime

Batteries with Liquid Electrolyte Main Characteristics

Vented lead-acid batteries with tubular plates for Renewable Energy Storage applications

Pole

Specially designed pole for perfect sealing

Vent Plugs

Electrolyte basket level marking, for visual control of electrolyte level

Container

High impact resistant Polypropylene, translucent for easy electrolyte level monitoring

Tubular Positive Plate

Performance and durability with ultrasonic welding of bottom bar

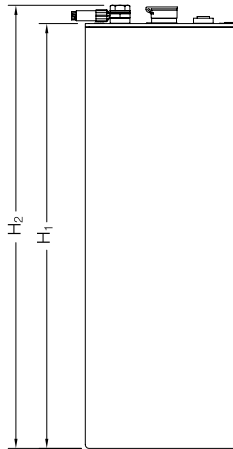


Product Range

Model	Voltage [V]	Rated Capacity at 20°C (68°F)			Dimensions				Weight		Terminal Details
		C ₁₂₀ / 1,85 V [Ah]	C ₄₈ / 1,80 V [Ah]	C ₁₂ / 1,80 V [Ah]	Length - L [mm (in)]	Width - W [mm (in)]	Height - H1 [mm (in)]	Height - H2 [mm (in)]	Wet [kg (lb)]	Dry [kg (lb)]	Number of Poles
RES 2 SOPzS 215	2	215	199	153	198 (7.80)	65 (2.56)	408 (16.06)	432 (17.01)	11.5 (25.4)	7.4 (16.3)	2
RES 3 SOPzS 310	2	310	288	222	198 (7.80)	83 (3.27)	408 (16.06)	432 (17.01)	15.4 (34.0)	10.0 (22.0)	2
RES 3 SOPzS 390	2	392	365	281	198 (7.80)	83 (3.27)	478 (18.82)	502 (19.76)	18.4 (40.6)	12.1 (26.7)	2
RES 4 SOPzS 500	2	503	470	363	198 (7.80)	101 (3.98)	478 (18.82)	502 (19.76)	23.3 (51.4)	15.4 (34.0)	2
RES 5 SOPzS 605	2	605	567	441	198 (7.80)	119 (4.69)	478 (18.82)	502 (19.76)	28.0 (61.7)	18.7 (41.2)	2
RES 4 SOPzS 720	2	721	688	539	198 (7.80)	101 (3.98)	613 (24.13)	637 (25.08)	30.5 (67.2)	21.0 (46.3)	2
RES 5 SOPzS 860	2	860	823	649	198 (7.80)	119 (4.69)	613 (24.13)	637 (25.08)	36.9 (81.4)	25.6 (56.4)	2
RES 6 SOPzS 965	2	969	933	741	198 (7.80)	137 (5.39)	613 (24.13)	637 (25.08)	43.4 (95.7)	30.2 (66.6)	2
RES 7 SOPzS 1270	2	1271	1206	941	198 (7.80)	174 (6.85)	613 (24.13)	637 (25.08)	51.6 (113.8)	35.0 (77.2)	2
RES 8 SOPzS 1380	2	1382	1318	1034	198 (7.80)	192 (7.56)	613 (24.13)	637 (25.08)	58.1 (128.1)	39.6 (87.3)	2

M10 Terminal type (applicable to all models).

All dimensions and weights shown are subject to manufacturing tolerances.



Metallic Trays

Battery trays for complete system solutions in 12V, 24V and 48V for trouble free installation



Applications

Developed for Renewable Energy Systems & Demanding Cyclic Applications



Residential Installations,
Off-Grid Power Systems

Infrastructure PV Systems



Remote Telecom Stations



Water Pumping Systems



Traffic Signal Systems




Road Lighting



IEC 60896-11/ IEC 62485-2/ IEC 61427
ISO 9001/ ISO 14001/ ISO 45001

SUNLIGHT
POWER IS KNOWLEDGE



 www.akuval.com
 akuval@akuval.com
 96 134 39 50