

CODING (example)

| MODEL | V | A | CURVE code |
|-------|----|-----|------------|
| n | n | n | n |
| HTU | 48 | 140 | 016 |



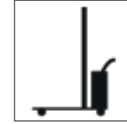
SUITABLE BATTERIES

Lead acid - PzS
 GEL - AGM - VRLA - PzV
 Lithium - (on demand)

EXPECTED RECHARGE TIME

7-13,5h

MAIN APPLICATIONS



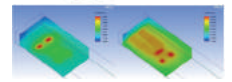
HIGH PERFORMANCES

 **94%**
Efficiency

95%
POWER FACTOR 

High Efficiency 94% and Power Factor 95%

CLEAN AND ROBUST



New cooling system directed only on the heatsink

EASY AND FLEXIBLE



USB charger control interface for programming and diagnostics (LCD version on demand)

INNOVATIVE

tray 1
tray 2
tray 3



New charger structure conception by compartments

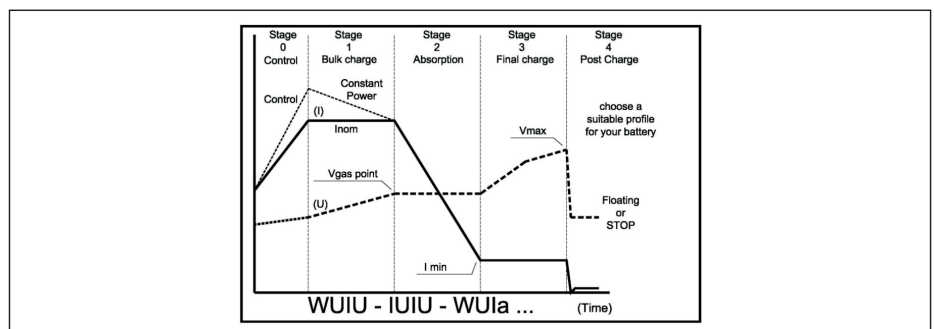
MODELS AVAILABLE

| V | A | VAC | CODE | Ah in 7-8,5h* | Ah in 11-13,5h* | cabinet code |
|----|-----|-------|-------------|---------------|-----------------|--------------|
| 24 | 80 | 3X400 | HTU 24/ 80 | 332-493 | 673-806 | 7 |
| | 100 | 3X400 | HTU 24/ 100 | 415-616 | 841-1007 | 7 |
| | 120 | 3X400 | HTU 24/ 120 | 498-739 | 1009-1209 | 7 |
| 36 | 80 | 3X400 | HTU 36/ 80 | 332-493 | 673-806 | 7 |
| | 100 | 3X400 | HTU 36/ 100 | 415-616 | 841-1007 | 7 |
| | 120 | 3X400 | HTU 36/ 120 | 498-739 | 1009-1209 | 7 |
| | 140 | 3X400 | HTU 36/ 140 | 582-863 | 1177-1410 | 7 |
| 48 | 100 | 3X400 | HTU 48/ 100 | 415-616 | 841-1007 | 7 |
| | 120 | 3X400 | HTU 48/ 120 | 498-739 | 1009-1209 | 7 |
| | 140 | 3X400 | HTU 48/140 | 582-863 | 1177-1410 | 7 |
| 80 | 80 | 3X400 | HTU 80/ 80 | 332-493 | 673-806 | 7 |
| | 100 | 3X400 | HTU 80/ 100 | 415-616 | 841-1007 | 7 |
| | 120 | 3X400 | HTU 80/ 120 | 498-739 | 1009-1209 | 7 |

*Ah referred to lead acid batteries

MAIN CHARGING PROFILES AVAILABLE

| |
|-----------|
| WUa/IUa |
| WUoU/IUoU |
| WUIa/IUIa |
| WUIU/IUIU |
| on demand |



GENERAL CHARACTERISTICS

| | |
|--------------------------------|---|
| General information | High Frequency charger - switching technology - suitable for a wide range of battery. PzS, PzV, AGM and Gel |
| Visual Signalling | LCD display (HTUA). 4 LEDs and 2 keys on the front side (HTU1). |
| Charger setting | by LCD Display (HTUA): Current, Battery Ah and preset charging profiles |
| | by 4Leds/buttons (HTU1): 50-70-80-100%Current, Battery Ah and 7 preset charging profiles |
| | by laptop/USB port common for both versions (HTU1 and HTUA): full programming |
| External Signalling (optional) | 2 Contacts programmable (optional) |
| Storage Data (optional) | Charger gives a Report of the last 50 charges and other information by integrated USB door |
| Operating Temperature | 0° to +40°C full power |
| Storage Temperature | -5 to +40°C |
| Max Humidity | 90% without condensation RH |

ELECTRICAL CHARACTERISTICS AND SAFETIES

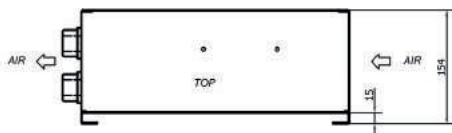
| | |
|-----------------------------|---|
| Mains | 400V (3ph) +/-10% 50-60Hz Vmax 440V, Vmin 360 V |
| Efficiency and Power factor | 93-94%=efficiency ; 95%=PF |
| Input Protection | 3 Fuses |
| Output Protection | By FUSE (reverse polarity protection) |
| Thermal Protections | 3 probes: one on IGBT, diodes and power transformer. |
| Insulation | 2 kV |
| Output short circuit | Protected (by undervoltage) charger shut down in few seconds |
| Opening Output Cables | Protected (by undervoltage) charger shut down in few seconds |

OPTIONALS

| | |
|-------------------------------|---------------------------|
| stand alone - wall mounted | Cable holder |
| stand alone | Charger stand |
| On board / stand alone / wall | Dedicated thermal coating |

MECHANICAL CHARACTERISTICS

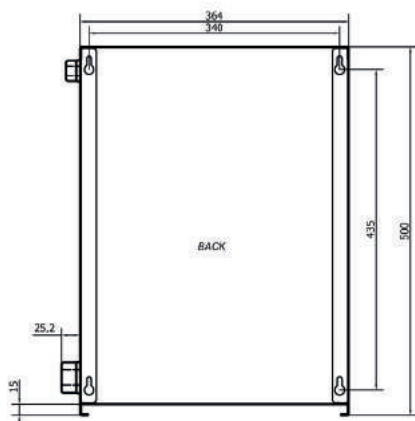
| | |
|---------------------------|---|
| Dimension | 500 (L -body) 364 (W) 154 (h)mm |
| Wall mounting | 435 x 340 mm |
| Protection Degree | IP 21 (vertical) |
| Installation requirements | Ventilated Charger do not cover Air Openings (distance 300 mm typ.) |
| Weight | 18Kg (without cables) referred to HFT 48/120 |
| Input cable length | 2.500 mm (length) |
| Input Plug | (optional) |
| Output cable | 2.500 mm (length) |
| Output Plug | (optional) |
| Packaging | 600 (L) 500 (W) 210 (h) mm |



<<< 4LEDs

<<< USB

<<< 2 MODE BUTTONS



<<< 4LEDs

<<< LCD

<<< DISPLAY

<<< USB

<<< 4 BUTTONS

