



# LITHIUM IRON PHOSPHATE BATTERY

**FEATURES** Lithium Iron Phosphate (LiFePO<sub>4</sub>): the Safest Lithium Technology.  
 Integrated Battery Management System(BMS).  
 Bluetooth/RS485/RS232/SMBus/CANBus (Optional).  
 SOC LED/LCD Indicator(Optional).

**PERFORMANCE** Long Cycle Life > 2000cycles @ 100% DOD.  
 High Density, High Discharge Current, High Temperature Range.  
 Low Weight, Free Maintenance.  
 Fast Charging.  
 Environment Friendly.



MIL24-0.77 (25,6V30AH, 768Wh)

## BATTERY DATA SHEET

### Electrical Parameters

Nominal Voltage	25,6V
Rated Capacity	30Ah
Energy	768Wh
Resistance	≤30m Ω
Efficiency	99%
Cycle Life	>2000cycles @1C,100% DOD
Self Discharge	2% per Month
Max. Modules in Series/Parallel	8S/9P

### Mechanical Parameters

Dimension(L x W x H)	260x168x212mm
	10.23x6.61x8.34"
Weight	8kg(17.63lbs)
Terminal Type	M6
Battery Housing	ABS, UL-94 V-0
Housing Protection	IP65
Cell Type-Chemistry	LiFePO <sub>4</sub>
SOC Display(Optional)	LED/LCD Indicator

### Discharge Parameters

Continuous Discharge Current	30A
Pulse Discharge Current	50A(>3 seconds)
Recommended Volt. Disconnect	20V
BMS Discharge Cut-off Voltage	16V
Reconnect Voltage	18.4V
Short Circuit Protection	200~600 us

### Charge Parameters

Charge Method	CC-CV
Charge Voltage	28.8~29.6V
Recommended Float Voltage	27.6V
Recommended Charge Current	15A
Maximum Charge Current	30A
BMS Charge Cut-off Voltage	31.2V

### Compliance Certificate

Certifications	UL1642(cell)
	CE
	IEC62133 & CB
	KC
	BIS
Shipping Classification	UN3480, Class 9, UN38.3

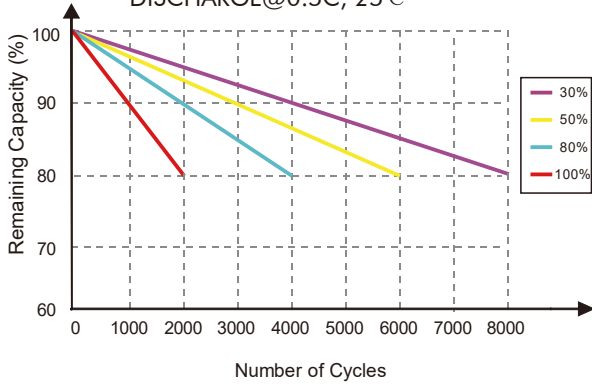
### Temperature Parameters

Discharge Temperature	-30 to 60°C (-22 to 140°F)
Charge Temperature	0 to 45°C (32 to 113°F)
Storage Temperature	-40 to 60°C(-40 to 140°F)
BMS High Temperature Cut-off	80°C(176°F)

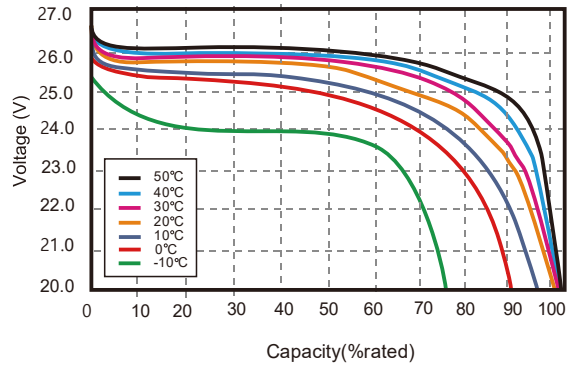


## Performance Characteristics

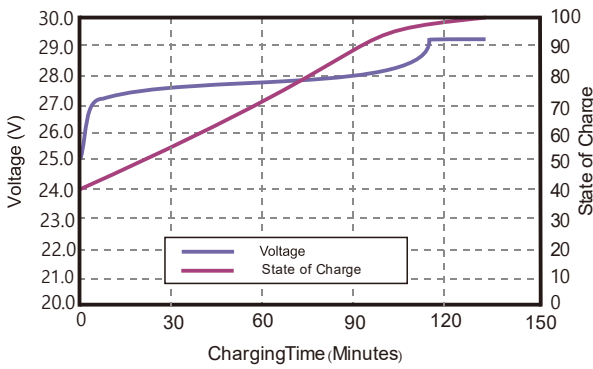
CYCLE LIFE vs. DEPTH OF DISCHARGE(DOD)  
DISCHARGE@0.5C, 25°C



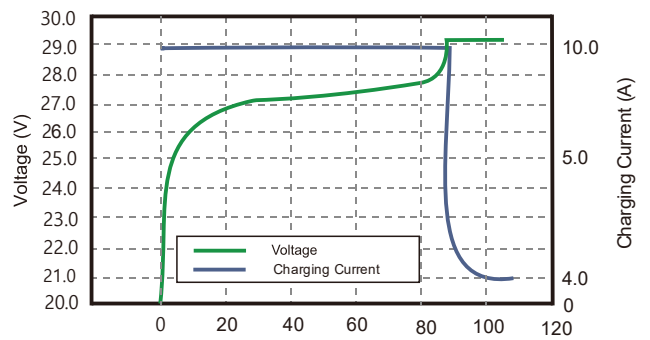
DISCHARGE CAPACITY at VARIOUS TEMPERATURES  
DISCHARGE @0.5C, 25°C



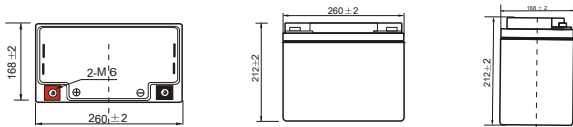
STATE OF CHARGE CURVE @0.5C, 25°C



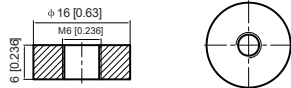
CHARGING CHARACTERISTICS @0.5C, 25°C



### Battery Dimension



M6 - 1.0x 6mm Terminal



### Battery Applications

- + Data Center UPS
- + Telecom Backup Power
- + Military Power Supply
- + Solar Energy Storage System
- + Solar Street LED Lightings
- + Autonomously Guided Vehicles (AGVs)
- + Industrial Robotics & Handling Equipment
- + Aerial Work Platform
- + Floor Cleaning Machines
- + Power Tools, Lawn Mower
- + Electric Bike & Motorcycles
- + Electric Mobilities (E-scooters, Wheelchair)
- + Golf Trolley & Golf Carts
- + Medical Devices
- + Electric Ships
- + Passenger Vehicles

### Battery Recycle



**NOTE:** Do Not Mix With Sealed Lead Acid Batteries When Recycling.  
See User's Manual for Proper Operation.